



## PARTIES & NETWORKING EVENTS 2009

Deep in heart of historic London, beneath the arches of London Bridge, lies the infamous London Dungeon. This is the ultimate alternative fun venue, a unique combination of real history, horror and humour that is perfect for parties and networking events of between 75 and 220 guests.

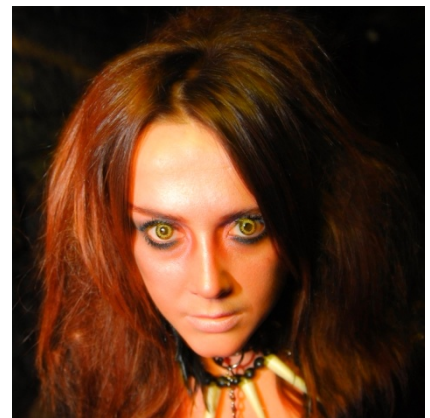
Transport yourself back to the darkest moments in the capital's history. Shocks and surprises lurk round every corner in the Dungeon's warren of avenues and alleyways. Now with the added scare ride 'Extremis: Drop Ride to Doom' the London Dungeon provides an even more thrilling and chilling venue for corporate events!

The London Dungeon is located next to London Bridge Station and close to the City with easy access to the West End and Canary Wharf via the Jubilee Line. This central location makes the Dungeon an inspired choice for networking events with added show elements to entertain your guests.

### This package has been specially designed to leave you screaming for more! Are you brave enough?

- 7.00 pm** A red carpet awaits as guests arrive at the entrance and are greeted by hostesses. Coats and bags are checked into the cloakroom and guests are invited to enter the depths of the Dungeon for pre-show drinks.
- 7.30 pm** In groups of 40 (lasting 20 minutes) the first 'Dungeon Experience' begins, 'Ghost Hosts' invite guests to follow them further into the Dungeons through the '**Labyrinth of the Lost**' the mirror maze; there's one way in, but is there a way out? Onto '**Judgement Day**' where you will be sentenced to your doom by Judges in the interactive courtroom. Lastly, those brave enough can embark upon their last journey on '**Extremis: Drop Ride to Doom**' at the mercy of the hangman. Taste the fear as the trapdoor opens and you drop, screaming into the darkness below...!
- 8.20 pm** The last 'Dungeon Experience' ends, food is served (until 9.15 pm) and bar opens.
- 9.00 pm** Guests are invited to take to the dance floor as the Dungeon DJ plays party tunes guaranteed to get everyone dancing.
- 11.30 pm** Bar closes.
- 11.45 pm** Disco closes.
- Midnight** Evening ends and guests depart.

For networking events the evening begins at 7.00 pm and ends at 10.00 pm (disco not included).



#### The package includes:

- Venue hire from 7.00 pm to midnight (10.00 pm for networking events)
- Doorman, red carpet, cloakroom and hostess team
- Beer, wine and soft drinks throughout the evening
- Background music
- DJ and disco (for party packages only)
- 'Dungeon Experience' scare shows for 40 minutes at the beginning of the evening

#### Price per person (not including catering)

<b>Party style events (7.00 pm - midnight)</b>	75-100 guests £79.50 + VAT
	101-150 guests £48.00 + VAT
	151-200 guests £45.00 + VAT
	201-220 guests £41.50 + VAT
<b>Networking events (7.00 pm - 10.00 pm)</b>	75-100 guests £64.00 + VAT
	101-150 guests £40.00 + VAT
	151-200 guests £39.50 + VAT
	201-220 guests £36.50 + VAT

*Continue your party until 2.00am for £5.95 + VAT per person per hour*



A panel of London's finest caterers have been selected to allow you the event organiser to choose the one that works best for your event. These caterers will be able to produce a bespoke menu to your exact requirements.

For more information, to book a venue visit or to check availability, please call **020 7487 0224** email [events@merlinvenues.com](mailto:events@merlinvenues.com) or visit [www.merlinvenues.com](http://www.merlinvenues.com) for images of recent events and virtual tours.